

Human IgG1(LALA) Isotype Control(Anti-HEL)

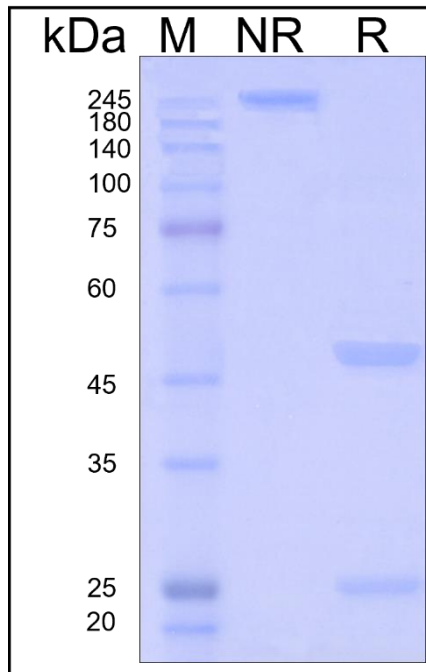
Product Information

Product Name	Human IgG1(LALA) Isotype Control(Anti-HEL)
Storage temp.	Store at +4°C short term . Store at -20°C or -80°C long term, avoiding freeze/thaw cycles.
Catalog# / Size	GM-77403AB-1mg / 1 mg GM-77403AB-5mg / 5 mg GM-77403AB-25mg / 25 mg GM-77403AB-50mg / 50 mg GM-77403AB-100mg / 100 mg

Antibody Information

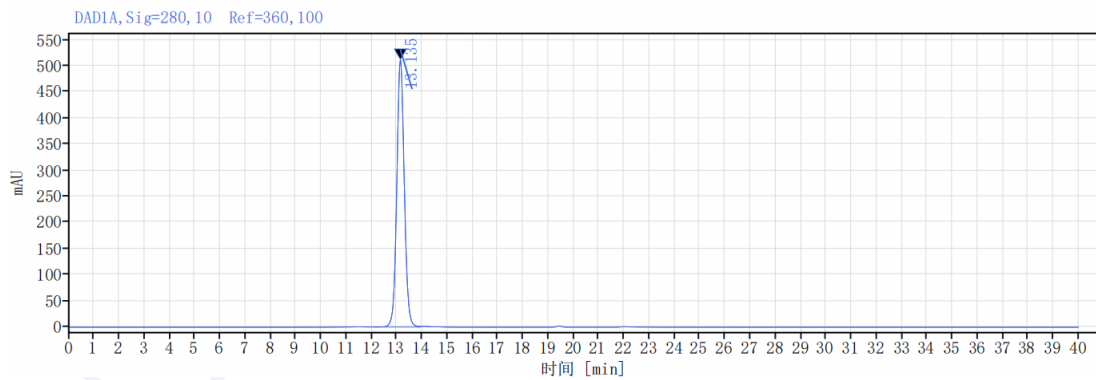
Target	/
Antibody Type	Monoclonal
Isotype	/
Clone	/
Expression System	CHO
Aggregation	< 5% as determined by SEC-HPLC
Purity	> 95% as determined by SDS-PAGE
Endotoxin	< 1 EU/mg, determined by LAL gel clotting assay
Sterility	0.2 μm Filtered
Antigen	Hen egg Lysozyme
Conjugate	Unconjugated
Application	Negative control
Alternative Names	/
Description	/
Formulation	20 mM Histidine, pH 6.0

SDS-PAGE



On SDS-PAGE under reducing (R)/non-reducing(N-R) condition. The gel was stained overnight with Coomassie Blue. The purity of the protein is greater than 95%.

SEC-HPLC



The purity of this product is more than 95% verified by SEC-HPLC.